



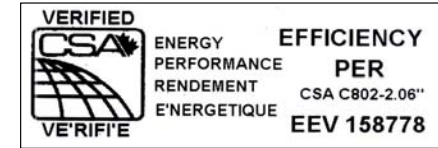
DIVISION OF TRANSFACTOR INDUSTRIES INC.  
 65 Basaltic Rd. Concord, ON, L4K 1G4 Canada  
 Tel: 905-695-8844, 1-800-387-2840 Fax: 905-695-8855  
 www.RexPowerMagnetics.com

## ENERGY EFFICIENT TRANSFORMER

- 1 Phase Isolation
- Dry Type
- ANN Self Cooled

Purchaser: TBA  
 PO#: TBA  
 SWO#: TBA  
 Qty: TBA

**PRELIMINARY DRAWING ONLY**  
 This drawing may NOT truly reflect our Final Design. Any resulting order(s) must be accompanied by, or refer to this drawing and be marked with any proposed changes.



Coils: Aluminum  
 Cat. No.: SA15J-K/Z

kVA: 15  
 Primary: 600 Volts  
 Secondary: 120/240 Volts  
 Primary Taps: 2.5 %  
 -Taps FCAN 2  
 -Taps FCBN 2

Frequency: 60 Hz  
 Sound Level: 45 dB Max.  
 BIL: 10 kV  
 Insulation Class: 220° C  
 Temperature Rise: 150° C  
 Impedance: 4.5 - 5.5 %

Min. Efficiency: 97.7 %  
 - Calculated @ 35% Loaded

| Termination | Location | Lug Size |
|-------------|----------|----------|
| Primary:    | Front    | 2-14 AWG |
| Secondary:  | Front    | 2-14 AWG |

### Wiring Connection:

#### Primary: H1, H2

| Voltage | % Tap | Jumpers To: |
|---------|-------|-------------|
| 630     | 105.0 | 1 - 1       |
| 615     | 102.5 | 2 - 2       |
| 600     | 100.0 | 3 - 3       |
| 585     | 97.5  | 4 - 4       |
| 570     | 95.0  | 5 - 5       |

#### Secondary: X1, X2, X3, X4

| Voltage | Interconnect:         | Connect Loads To:              |
|---------|-----------------------|--------------------------------|
| 240     | X2 to X3              | X1 - X4                        |
| 120     | X1 to X3 and X2 to X4 | X1 - X4                        |
| 120/240 | X2 to X3              | X1 - X2 - X4 (X2 is a neutral) |

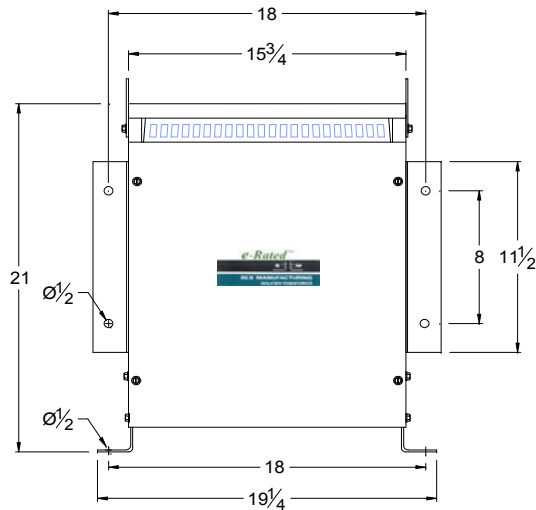
### Standards:

1. CSA Certified  
 - File No. LR34493
2. UL Listed  
 - File No. E108255

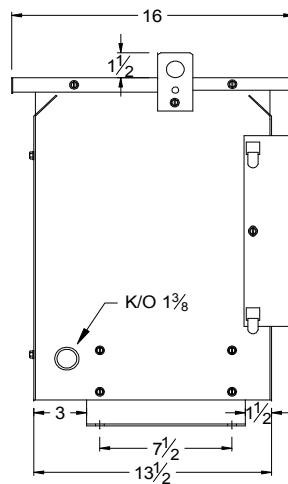
### Standard Features:

1. Anti-vibration pads installed between the enclosure base and the core & coil assembly
2. Ground lug provided
3. Transformer meets Efficiency per CSA C802.2
4. Transformer meets NEMA TP-1 Efficiency Level

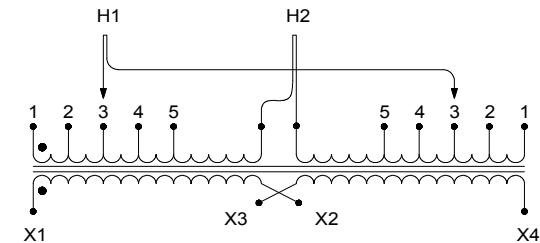
Weight: 185 Lbs



FRONT VIEW



SIDE VIEW



### CSA Enclosure:

1. Type 3R (NEMA 3R)  
 - Sprinklerproof when the angle between sprinkler heads and opening in the enclosure does Not exceed 45 degree from the vertical.
2. Ventilated
3. ASA 61 grey
4. Floor/Wall mounting

|      |                        |    |             |             |
|------|------------------------|----|-------------|-------------|
| 1    | Updated vector diagram | AP | VS          | Feb.2, 2011 |
| Rev. | Remarks                | By | Approved by | Date        |

Prepared by: SA  
 Approved by: VS  
 Date: FEB.2, 2011