

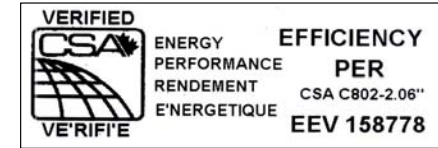
DIVISION OF TRANSFACTOR INDUSTRIES INC.
 65 Basaltic Rd. Concord, ON, L4K 1G4 Canada
 Tel: 905-695-8844, 1-800-387-2840 Fax: 905-695-8855
 www.RexPowerMagnetics.com

ENERGY EFFICIENT TRANSFORMER

- 1 Phase Isolation
- Dry Type
- ANN Self Cooled

Purchaser: TBA
 PO#: TBA
 SWO#: TBA
 Qty: TBA

PRELIMINARY DRAWING ONLY
 This drawing may NOT truly reflect our Final Design. Any resulting order(s) must be accompanied by, or refer to this drawing and be marked with any proposed changes.



Coils: Copper
 Cat. No.: SC25H-K/Z

kVA: 25
 Primary: 480 Volts
 Secondary: 120/240 Volts
 Primary Taps: 2.5 %
 -Taps FCAN 2
 -Taps FCBN 2

Frequency: 60 Hz
 Sound Level: 45 dB Max.
 BIL: 10 kV
 Insulation Class: 220° C
 Temperature Rise: 150° C
 Impedance: 4.5 - 5.5 %

Min. Efficiency: 98 %
 - Calculated @ 35% Loaded

Weight: 229 Lbs

| Termination | Location | Lug Size |
|-------------|----------|------------|
| Primary: | Front | 2-14 AWG |
| Secondary: | Front | 2/0-14 AWG |

Wiring Connection:

| Primary: H1, H2 | | Voltage | | % Tap | Jumpers To: |
|-----------------|--|---------|--|-------|-------------|
| 504 | | 105.0 | | | 1 - 1 |
| 492 | | 102.5 | | | 2 - 2 |
| 480 | | 100.0 | | | 3 - 3 |
| 468 | | 97.5 | | | 4 - 4 |
| 456 | | 95.0 | | | 5 - 5 |

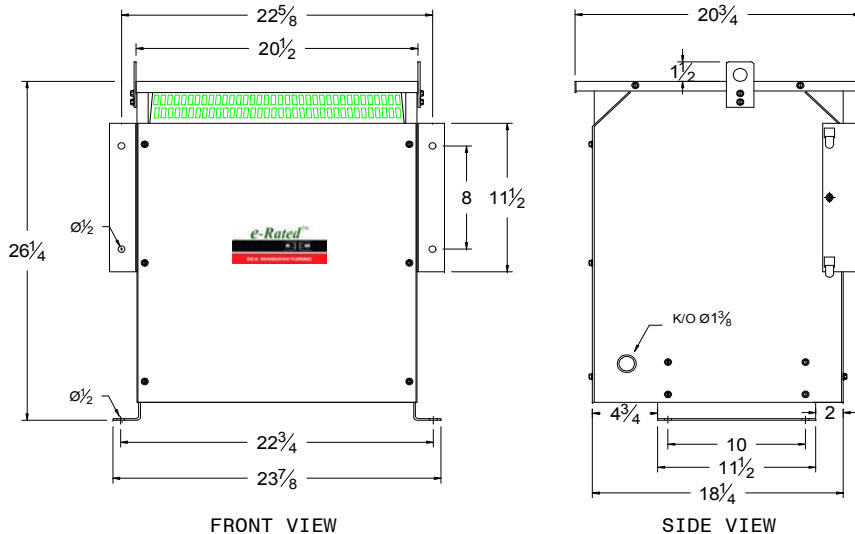
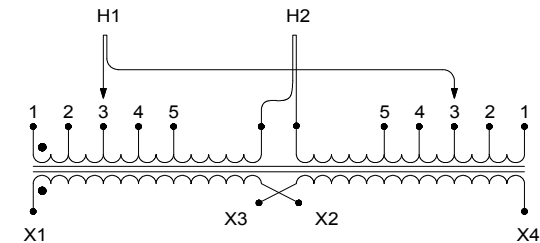
| Secondary: X1, X2, X3, X4 | | Voltage | | Interconnect: | Connect Loads To: |
|---------------------------|--|---------|--|-----------------------|-----------------------------------|
| 240 | | | | X2 to X3 | X1 - X4 |
| 120 | | | | X1 to X3 and X2 to X4 | X1 - X4 |
| 120/240 | | | | X2 to X3 | X1 - X2 - X4 (X2 is a neutral) |

Standards:

1. CSA Certified
 - File No. LR34493
2. UL Listed
 - File No. E108255

Standard Features:

1. Anti-vibration pads installed between the enclosure base and the core & coil assembly
2. Ground lug provided
3. Transformer meets Efficiency per CSA C802.2
4. Transformer meets NEMA TP-1 Efficiency Level



CSA Enclosure:

1. Type 3R (NEMA 3R)
 - Sprinklerproof when the angle between sprinkler heads and opening in the enclosure does Not exceed 45 degree from the vertical.
2. Ventilated
3. ASA 61 grey
4. Floor/Wall mounting

| 1 | Updated vector diagram | AP | VS | Feb.2, 2011 |
|------|------------------------|----|-------------|-------------|
| Rev. | Remarks | By | Approved by | Date |

Prepared by: SA
 Approved by: VS
 Date: FEB.2, 2011