

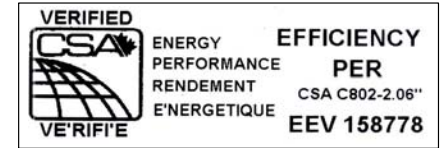
DIVISION OF TRANSFACTOR INDUSTRIES INC.  
 65 Basaltic Rd. Concord, ON, L4K 1G4 Canada  
 Tel: 905-695-8844, 1-800-387-2840 Fax: 905-695-8855  
 www.RexPowerMagnetics.com

## ENERGY EFFICIENT TRANSFORMER

- 1 Phase Isolation
- Dry Type
- ANN Self Cooled

Purchaser: TBA  
 PO#: TBA  
 SWO#: TBA  
 Qty: TBA

**PRELIMINARY DRAWING ONLY**  
 This drawing may NOT truly reflect our Final Design. Any resulting order(s) must be accompanied by, or refer to this drawing and be marked with any proposed changes.



Coils: Copper  
 Cat. No.: SC50J-K/Z

kVA: 50  
 Primary: 600 Volts  
 Secondary: 120/240 Volts  
 Primary Taps: 2.5 %  
 -Taps FCAN 2  
 -Taps FCBN 2

Frequency: 60 Hz  
 Sound Level: 50 dB Max.  
 BIL: 10 kV  
 Insulation Class: 220° C  
 Temperature Rise: 150° C  
 Impedance: 4.5 - 5.5 %

Min. Efficiency: 98.3 %  
 - Calculated @ 35% Loaded

Weight: 369 Lbs

Termination	Location	Lug Size
Primary:	Front	2-14 AWG
Secondary:	Front	6-300 MCM

### Wiring Connection:

Primary: H1, H2		
Voltage	% Tap	Jumpers To:
630	105.0	1 - 1
615	102.5	2 - 2
600	100.0	3 - 3
585	97.5	4 - 4
570	95.0	5 - 5

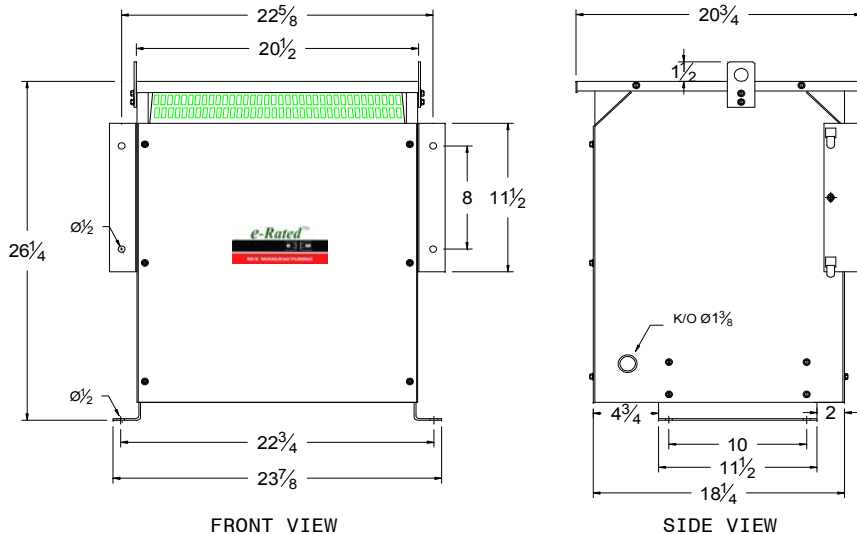
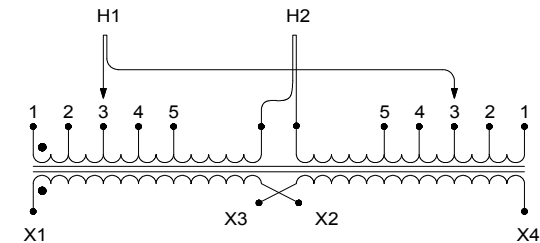
Secondary: X1, X2, X3, X4		
Voltage	Interconnect:	Connect Loads To:
240	X2 to X3	X1 - X4
120	X1 to X3 and X2 to X4	X1 - X4
120/240	X2 to X3	X1 - X2 - X4 (X2 is a neutral)

### Standards:

1. CSA Certified  
 - File No. LR34493
2. UL Listed  
 - File No. E108255

### Standard Features:

1. Anti-vibration pads installed between the enclosure base and the core & coil assembly
2. Ground lug provided
3. Transformer meets Efficiency per CSA C802.2
4. Transformer meets NEMA TP-1 Efficiency Level



### CSA Enclosure:

1. Type 3R (NEMA 3R)  
 - Sprinklerproof when the angle between sprinkler heads and opening in the enclosure does Not exceed 45 degree from the vertical.
2. Ventilated
3. ASA 61 grey
4. Floor/Wall mounting

1	Updated vector diagram	AP	VS	Feb.2, 2011
Rev.	Remarks	By	Approved by	Date

Prepared by: SA  
 Approved by: VS  
 Date: FEB.2, 2011