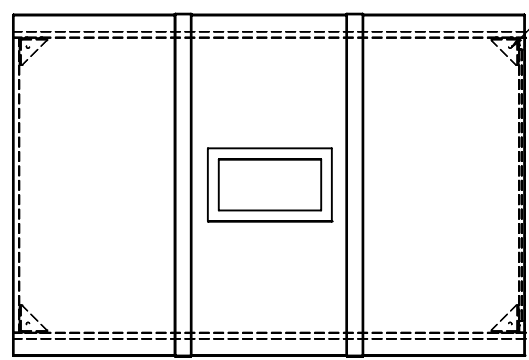


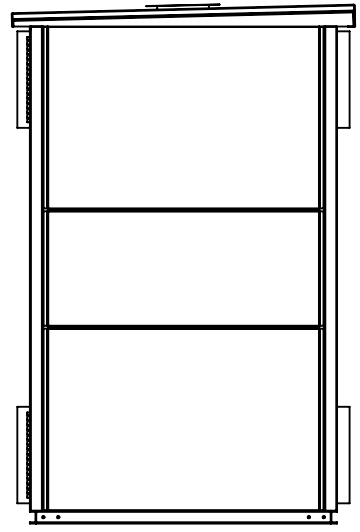
**CSA ENCLOSURE: E3R-21-W**

RATING	TYPE 3R / NEMA 3R (INDOOR/OUTDOOR VENTILATED)
FINISH	POLYESTER POWER COAT
COLOR	ASA 61 GREY
MOUNTING	FLOOR
WEIGHT	2887 LBS

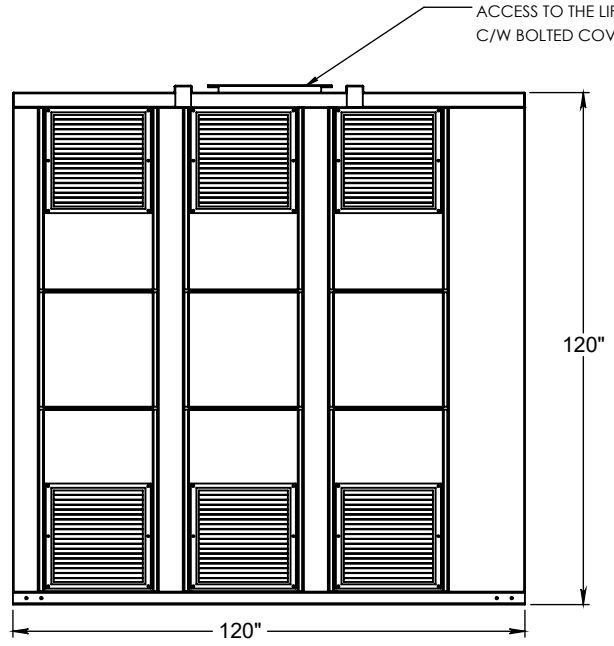


ENCLOSURE BOLTDOWN  
4-HOLES 0.626 DIA

TOP



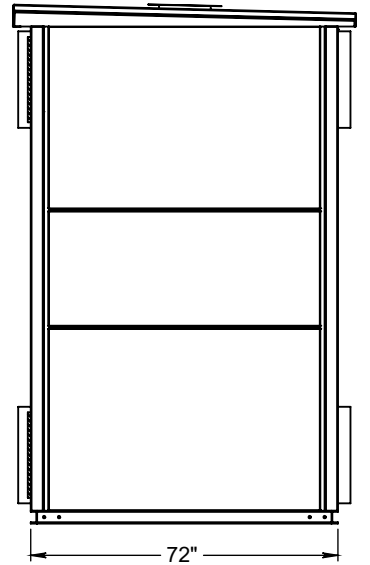
LEFT



ACCESS TO THE LIFTING EYES  
C/W BOLTED COVER

120"

FRONT



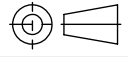
RIGHT

**NOTES:**

- METAL GAUGE TO CAN/CSA-C22.2 NO. 94.1-15
- CSA CERTIFIED - FILE NO. LR34493
- BOLTED KNOCKDOWN CONSTRUCTION
- OPEN BOTTOM. TRANSFORMER IS FREE STANDING IN ENCLOSURE
- COVERED ROOF OPENINGS FOR ACCESS TO LIFTING POINTS ON TRANSFORMER C&C
- AN AIR SPACE OF NOT LESS THAN 300MM (12 INCHES) IS REQUIRED BETWEEN TRANSFORMER ENCLOSURES AND BETWEEN A TRANSFORMER ENCLOSURE AND ANY ADJACENT SURFACE EXCEPT FLOOR
- ALUMINUM MESH FILTERS INSTALLED BEHIND EACH CHEVRON PANEL.
- ADEQUATE VENTILATION IS ESSENTIAL FOR THE PROPER COOLING OF TRANSFORMER. FILTERS SHOULD BE INSPECTED FOR DUST AND CLEANED TO PERMIT FREE CIRCULATION OF AIR.

UNLESS OTHERWISE SPECIFIED:  
DIMENSIONS ARE IN INCHES  
.XX = ± 0.03"  
.XXX = ± 0.010"  
.XXXX = ± 0.0005"  
FRACTIONS = ± 1/16"  
ANGLES = ± 1°

THE INFORMATION ON THIS DRAWING IS THE PROPERTY OF REX POWER MAGNETICS. IS DISCLOSED IN CONFIDENCE AND IS NOT TO BE REPRODUCED, USED OR DISCLOSED EXCEPT FOR THE PURPOSE FOR WHICH FURNISHES.



THIRD-ANGLE  
PROJECTION

	NAME	DATE
DRAWN	HB	06/19/2020
APPROVED	KH	06/19/2020
MATERIAL	STEEL	
FINISH	ANSI/ASA 61	

TITLE: <b>NEMA 3R ENCLOSURE- E3R-21-W</b>		
SIZE	DWG. NO.	REV
<b>A</b>	E3R-21-W	



SCALE: NTS	WEIGHT: 2887 LBS	SHEET 1 OF 1
------------	------------------	--------------