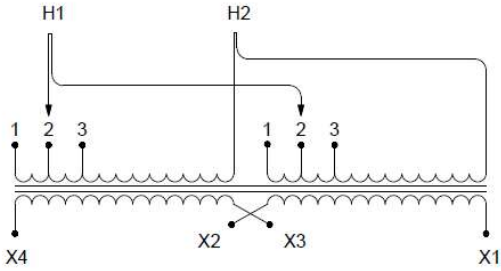


## SCHEMATIC' 8S

## CONNECTIONS

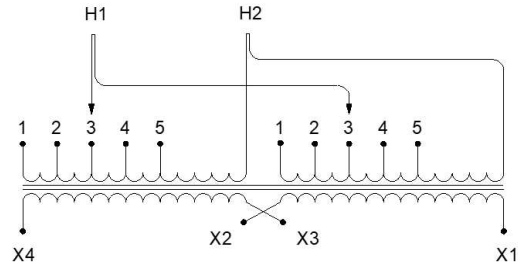


Primary volts	Jumpers to	Connect lines to
630	1-1	H1-H2
600	2-2	H1-H2
570	3-3	H1-H2

Secondary volts	Inter-connect	Connect lines to
240	X2 to X3	X1-X4
120	X1 to X3 & X2 to X4	X1-X4
120/240	X2 to X3	X1-X2-X4 (X2 is neutral)

## SCHEMATIC' 9S

## CONNECTIONS



Primary volts	Jumpers to	Connect lines to
630	1-1	H1-H2
615	2-2	H1-H2
600	3-3	H1-H2
585	4-4	H1-H2
570	5-5	H1-H2

Secondary volts	Inter-connect	Connect lines to
240	X2 to X3	X1-X4
120	X1 to X3 & X2 to X4	X1-X4
120/240	X2 to X3	X1-X2-X4 (X2 is neutral)